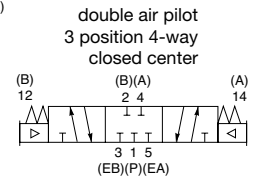
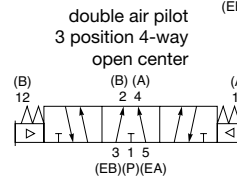
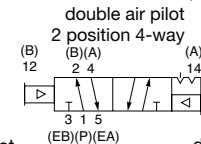
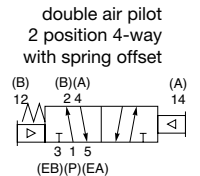
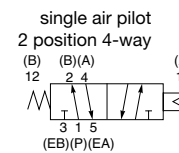
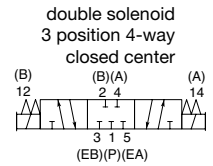
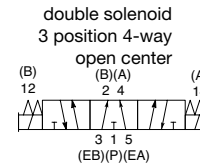
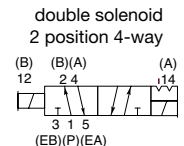
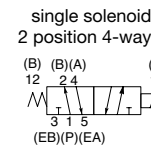
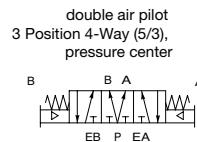
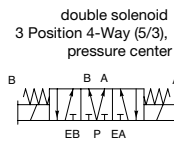


5 Ported, 2 and 3 position, 4-way, Spool & Sleeve

Cv: 1.5

- Direct solenoid or air pilot actuated
- Plug-in solenoid with indicator light
- Unlubricated or lubricated service
- Integral speed control available
- Integral regulators available
- NEMA 4
- Body to base plug-in



Technical Data

Valve Data		English		Metric Mark 15 Only	
Cv		1/4 NPTF = 1.4	3/8 NPTF = 1.5	1/4 G Tap = 1.4	3/8 G Tap = 1.5
Flow Capacity		65 SCFM	69 SCFM	1379 NL/m	1477 NL/m
		Upstream pressure to atmosphere @80 PSIG		@ 6 bar upstream/5 bar downstream	
Operating Pressure Range		28" Hg. Vacuum to 150 PSIG		Vacuum to 10 bar	
Temperature Range (Ambient)		-10°F to +115°F		-23°C to +46°C	
Pilot Pressure Range (PA15)	2-Position, Spring Return 2-Position, Detented 3-Position	20 to 125 PSIG 15 to 125 PSIG 20 to 125 PSIG			

Operating Data

All Solenoids Are Continuous Duty Rated		12 VDC	24 VDC	24 VAC 50 Hz	24 VAC 60 Hz	115 VAC 50 Hz	120 VAC 60 Hz	230 VAC 50 Hz	240 VAC 60 Hz
Power (Watts)		6.0	6.0	N/A	N/A	N/A	N/A	N/A	N/A
Holding Current (Amps.)		0.500	0.250	0.590	0.420	0.110	0.090	0.070	0.050
Inrush Current (Amps.)		N/A	N/A	2.850	2.530	0.630	0.580	0.310	0.290
Energize in seconds	2-Position, Single, Spring Return	0.038	0.034	0.010	0.010	0.010	0.010	0.010	0.010
	2-Position, Double, Detented	0.035	0.035	0.010	0.010	0.010	0.010	0.010	0.010
	3-Position, Spring Centered	0.040	0.040	0.010	0.010	0.010	0.010	0.010	0.010
De-energize in seconds	2-Position, Single, Spring Return	0.016	0.011	0.015	0.015	0.015	0.015	0.015	0.015
	2-Position, Double, Detented	N/A	N/A	N/A	N/A	N/A	N/A	N/A	N/A
	3-Position, Spring Centered	0.010	0.010	0.012	0.012	0.012	0.012	0.012	0.012

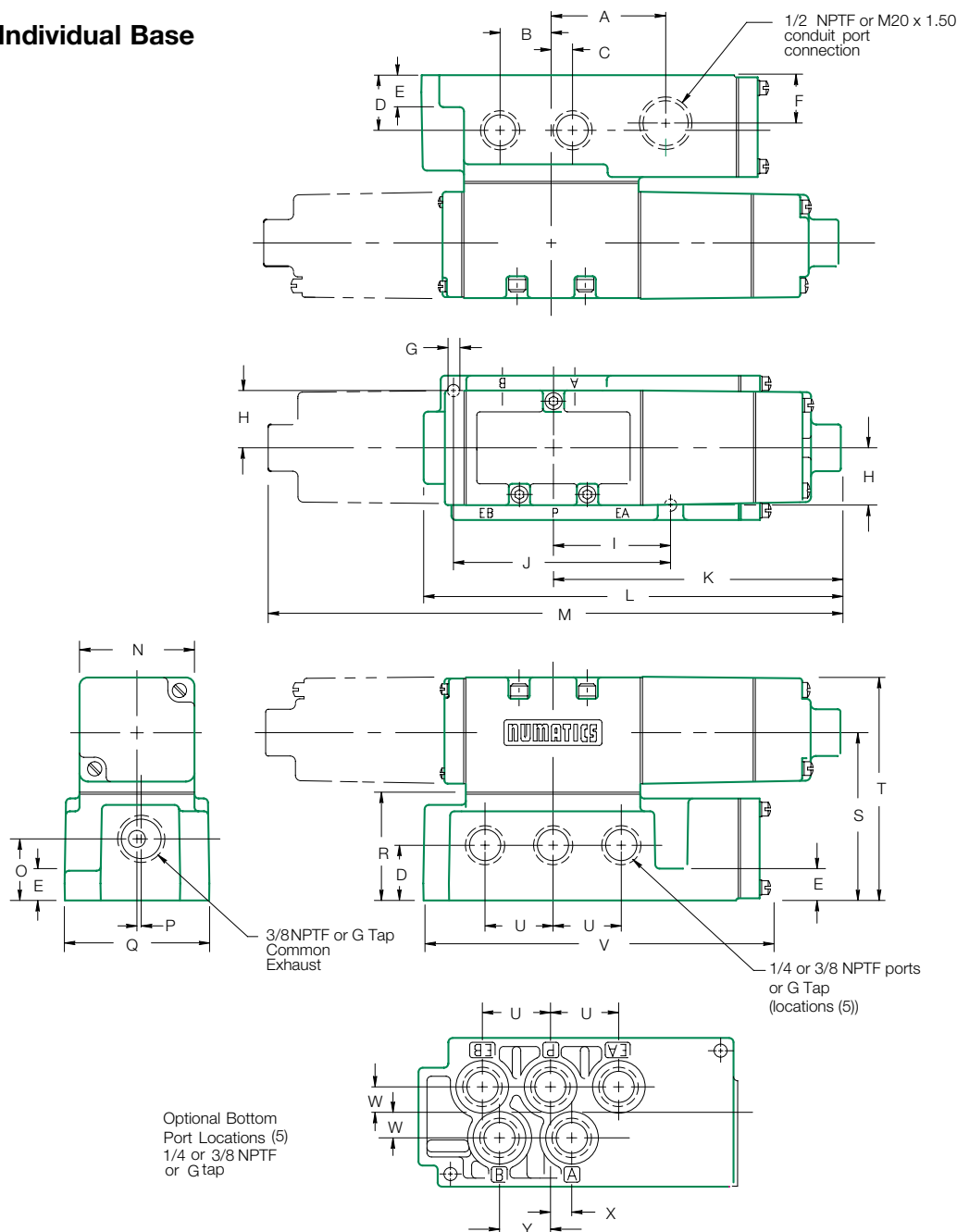
How to Order

Valves

	153	SA	4	15	K	0	000	30	
Valve Series & Port Size	152* = 1/4 153 = 3/8 *Valve unit only.								
Valve Type	SA = Single Solenoid, Spring Return W/Flush Non-locking Override SS = Double Direct Solenoid w/Flush Non-locking Override (Standard) JA = Single Air Pilot, Spring Return w/Flush Non-Locking Override (Std.) JJ = Double Air Pilot w/Flush Non-Locking Override JK = Double Air Pilot, Spring Return w/Flush Non-Locking Override PA = Single Air Pilot, Spring Return w/out Override PP = Double Air Pilot w/out Override								
Function	4 = 2 Position, 4-Way 5 = 3 Position, 4-Way Open Center 6 = 3 Position, 4-Way Closed Center 7 = 3 Position 4-Way (5/3), Pressure Center 0 = Manifold Block w/o Valve P = Manifold Block, w/Blank Station Plate								
Mounting	00 = Valve Unit, w/o Mounting 01 = Valve Unit, Speed Control, w/o Mounting 02 = Valve Unit w/ Long Screws for Speed Control 15 = Manifold Block, Side and Bottom Cylinder Ports 16 = Manifold Block, Side and Bottom Cylinder Ports, Auxiliary Inlet 1B = Manifold Block, Side and Bottom Cylinder Ports, Alternate Outlet 18 = Manifold Block, Side and Bottom Cylinder Ports, Alternate Outlet & Auxiliary Inlet 25 = Manifold Block, Side and Bottom Cylinder Ports, Speed Control 3A = Plug-in Base, Individual Exhaust, Side Cylinder Ports, (Mark 15 only) 3B = Plug-in Base, Individual Exhaust, Side and Bottom Cylinder Ports, (Mark 15 only) 3C = Plug-in Base, Individual Exhaust, Side Cylinder Ports, Speed Control (Mark 15 only) 3D = Plug-in Base, Individual Exhaust, Side and Bottom Cylinder Ports, Speed Control (Mark 15 only) 31 = Plug-in Base, Common Exhaust, Side Cylinder Ports (Mark 15 only) 32 = Plug-in Base, Common Exhaust, Side and Bottom Cylinder Ports (Mark 15 only) 35 = Plug-in Base, Common Exhaust, Side Cylinder Ports, Speed Control (Mark 15 only) 36 = Plug-in Base, Common Exhaust, Side and Bottom Cylinder Ports, Speed Control (Mark 15 only) 41 = Base, Individual Exhaust, Side Cylinder Ports (PA15 only) 43 = Base, Individual Exhaust, Side and Bottom Cylinder Ports (PA15 only) 44 = Base, Common Exhaust, Side Cylinder Ports (PA15 only) 46 = Base, Individual Exhaust, Side Cylinder Ports, Speed control (PA15 only) 48 = Base, Individual Exhaust, Side and Bottom Cylinder Ports, Speed Control (PA15 only) 49 = Base, Common Exhaust, Side Cylinder Ports, Speed Control (PA15 only) 54 = Base, Common Exhaust, Side and Bottom Cylinder Ports (PA15 only) 55 = Base, Common Exhaust, Side and Bottom Cylinder Ports, Speed Control (PA15 only)								
Voltage	00 = Manifold Block, w/o Valve 20 = 24 VAC, 50-60 Hz 30 = 110-120 VAC, 50-60 Hz 40 = 220-240 VAC, 50-60 Hz 60 = 12 VDC 61 = 24 VDC								
Options	000 = No Options 11B = Flush Locking Manual Override 11Y = Extended Non- Locking Manual Override 11Z = Extended Locking Manual Override 12A = FKM Seals on Sleeve Assembly 12B = Lubricant Free Assembly 13A = 4 Foot Leads 15W = 5-Pin Straight Mini Connector in Mounting; Pin 1=A+(14+), 2=A-(14-), 3=Gnd, 4=B+(12+), 5=B-(12-) 16T = Adds Bottom P (1) Port to Mounting 17N = Surge Suppression (DC Only) 19M = Terminal Block in Mounting 46T = Zinc Plated Solenoid Armature (A C Only) 47J = 5-Pin Straight Mini Connector in Mounting; Pin 1=B+(12+), 2=A-(14-), 3=Gnd, 4=A+(14+), 5=B-(12-) 56Y = 4 Pin Straight Micro Connector in Mounting; Pin 1=Not Used, 2=12+(B+), 3=Com, 4=14+(A+)								
Combination Options	41W = (11B) Flush Locking Manual Override & (17N) Surge Suppression (DC Only) 48S = (11B) Flush Locking Manual Override & (19M) Terminal Block in Mounting 26K = (11B) Flush Locking Manual Override & (46T) Zinc Plated Solenoid Armature (A C Only) 46Z = (11Z) Extended Locking Manual Override & (17N) Surge Suppression (DC Only) 26C = (11Z) Extended Locking Manual Override & (19M) Terminal Block in Mounting 48Q = (11Z) Extended Locking Manual Override & (46T) Zinc Plated Solenoid Armature (A C Only) 46P = (17N) Surge Suppression (DC Only) & (19M) Terminal Block in Mounting								
Port Type	0 = NPTF Pressure Ports w/NPTF Conduit Ports or Valve Unit w/o Mounting G = ISO228/1-G Pressure Ports w/ ISO Metric - 1.5mm Pitch Conduit Ports								
Wiring Option	K = Plug-in, w/ Light, VAC M = Plug-in, w/ Light, VDC 2 = DIN Plug-in Solenoid, VAC 4 = DIN Plug-in Solenoid, VDC 6 = DIN Plug-in Solenoid, w/ Light, VAC O = Non Plug-in (hardwired), VAC or Mounting Only w/ Electrical Receptacle B = Non Plug-in (hardwired), VDC or Mounting Only w/o Electrical Receptacle								

Dimensions: Inches (mm)

Mark 15
Valve on Individual Base



A	B	C	D	E	F	G	H	I	J	K (AC)	K (DC)	L (AC)	L (DC)	M (AC)
1.72 (43.7)	0.78 (19.8)	0.31 (7.9)	0.84 (21.3)	0.47 (11.9)	0.72 (18.3)	0.20 (5.1)	0.88 (22.4)	1.75 (44.5)	3.25 (82.6)	4.43 (112.5)	4.95 (125.7)	6.34 (161.0)	6.86 (174.2)	8.86 (225.0)

M (DC)	N	O	P	Q	R	S	T	U	V	W	X	Y
9.90 (251.5)	1.70 (44.7)	0.91 (23.0)	0.06 (1.5)	2.16 (54.9)	1.56 (39.6)	2.47 (62.7)	3.30 (83.8)	1.00 (25.4)	5.11 (130.0)	0.38 (9.6)	0.31 (7.9)	0.78 (19.8)